

To see a stone's throw from Roma Tre University



Basilica di San Paolo Fuori le Mura



With its imposing structure, the Basilica of San Paolo Fuori le Mura (Saint Paul Outside the Walls) is one of the four papal basilicas in Rome, the second largest after Saint Peter's. The church stands on the site where, according to tradition, the apostle Paul was buried.

Distance ca. 300 m from the Congress hall.

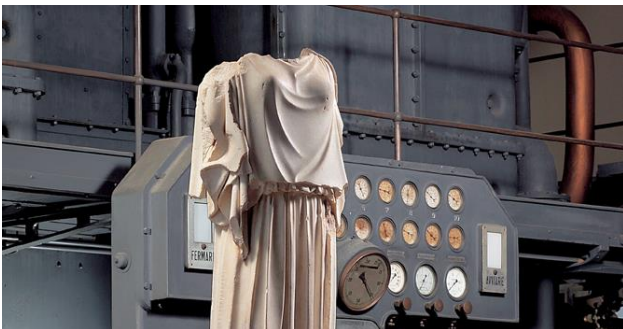
Piazzale San Paolo, 1

Info <https://basilicasanpaolo.org/>



MUSEI
IN COMUNE
ROMA

MUSEO CENTRALE MONTEMARTINI



The Montemartini Power Plant Museum is an extraordinary example of the reconversion of an industrial archaeology building into an old Roman art museum. Starting from ancient artworks dating back to Republican Rome (ca. 300 bce), the route winds through statuary groups of Roman temples and public buildings, and precious sculptures and mosaics that decorated the rich Roman houses.

Distance ca. 600 m from the Congress hall.

Via Ostiense, 106

Info <https://www.centralemontemartini.org/>

The Non-Catholic Cemetery (aka Protestant Cemetery or the English Cemetery or Poets' and Artists' Cemetery)

Cimitero acattolico di Roma, già Cimitero degli inglesi o dei protestanti o degli artisti e dei poeti



Rome's Non-Catholic Cemetery contains possibly the highest density of famous and important graves anywhere in the world. It is the final resting place of the poets Shelley and Keats, many painters, sculptors, writers, several scholars, several diplomats, Goethe's only son, and Antonio Gramsci, to name only a few.

Distance ca. 1,300 m from the Congress hall.

Via Caio Cestio, 6

Info <https://cemeteryrome.it/>;

<https://turismoroma.it/it/luoghi/cimitero-acattolico>